

Introducing

SIDH **BHIMESHWARI** **LOGISTICS** **PVT. LTD.**

www.bhimeshewarigroup.com



Our Company

We provide custom integrated Storage & transportation solutions. Our services provide storage and moving solutions to our customers are drastically reduced expenses while ensuring material security and safety. Our entire storage and moving facility is based on latest infrastructure and handling solutions by providing robust storage solutions

Mission / Vision

With a Vision to emerged as a leader in the cargo services domain with the support of our efficient and dynamic team of well experienced and professionally qualified personnel. Our mission is to exceed customer's expectations in the transfer of their goods from one destination to Another. We deliver value to our customers by providing the most reliable and efficient cargo solutions.



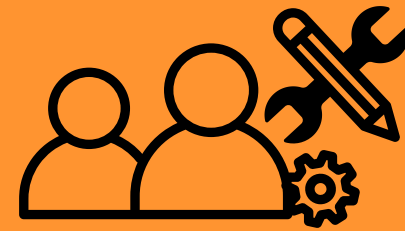
Services We Offered



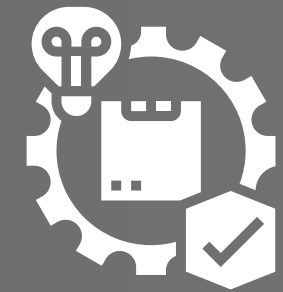
**3PL
WAREHOUSING**



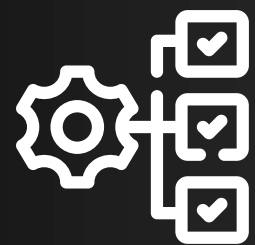
**DISTRIBUTION
SERVICES**



**FULFILLMENT
SERVICES**



**SUPPLY CHAIN
SOLUTIONS**



**INVENTORY
MANAGEMENT**



**IMPLANT
LOGISTICS**



**PROJECT
MANAGEMENT
SERVICES**



**LOGISTICS
CONSULTANT SERVICES**

Services Overview

Title: **3PL Warehousing & Distribution**

Locations: **Pan India Network**

Our moving and storage service ensures material security and safety with drastically reduced expenses. We provide robust storage solution. We firmly believe in providing high-quality, cost-effective and efficient services to our customers, with a team of dedicated members who don't mind walking extra mile for your satisfaction.

Key Objectives

- Secure Material handling
- Build Client Confidence
- Establish Competitive Advantage
- Point To Point Divisional Connectivity



Our Strength

Our core strength lies in our huge fleet base and operational capabilities to meet the ever changing customer requirements. Maximizing the use of technology and following proficient processes add supplementary strength to the division. Whether you are looking at your entire network or just one strategic location, a warehouse or a manufacturing unit, we can help you shape a supply chain strategy that is right for your customers and the future of your business.

Fleet Management:

We provide meticulously maintained trucking services to render demands of our customers with seamless connectivity. Our modern fleet of trucks provides timely delivery. Our full truck services are leveraged by many industries like pharmaceuticals, automotive industry, chemicals, food and beverages, electronics and many more.



SIDH BHIMESHWARI LOGISTICS



Latest Technologies

In today's business environment, processes are highly dependent on information technology. We at Sidh Bhimeshwari Logistics Pvt Ltd understand information and IT systems as essential assets and vital resources critical to the products and services that we provide to our customers and partners. It is important to secure these assets to ensure a reliable business operation.

WAREHOUSING CAPACITY

SOME OF OUR MAJOR LOCATIONS

Gurgaon/NCR
8500 sq.ft.



Gujrat - 8800 Sq.
Ft.



Haridwar-5000
Sq.Ft.



Pune-15000
Sq. ft.



Chennai- 10000
Sq.ft.



Hosur/Bangalore -
18000 Sq.ft.



Opex

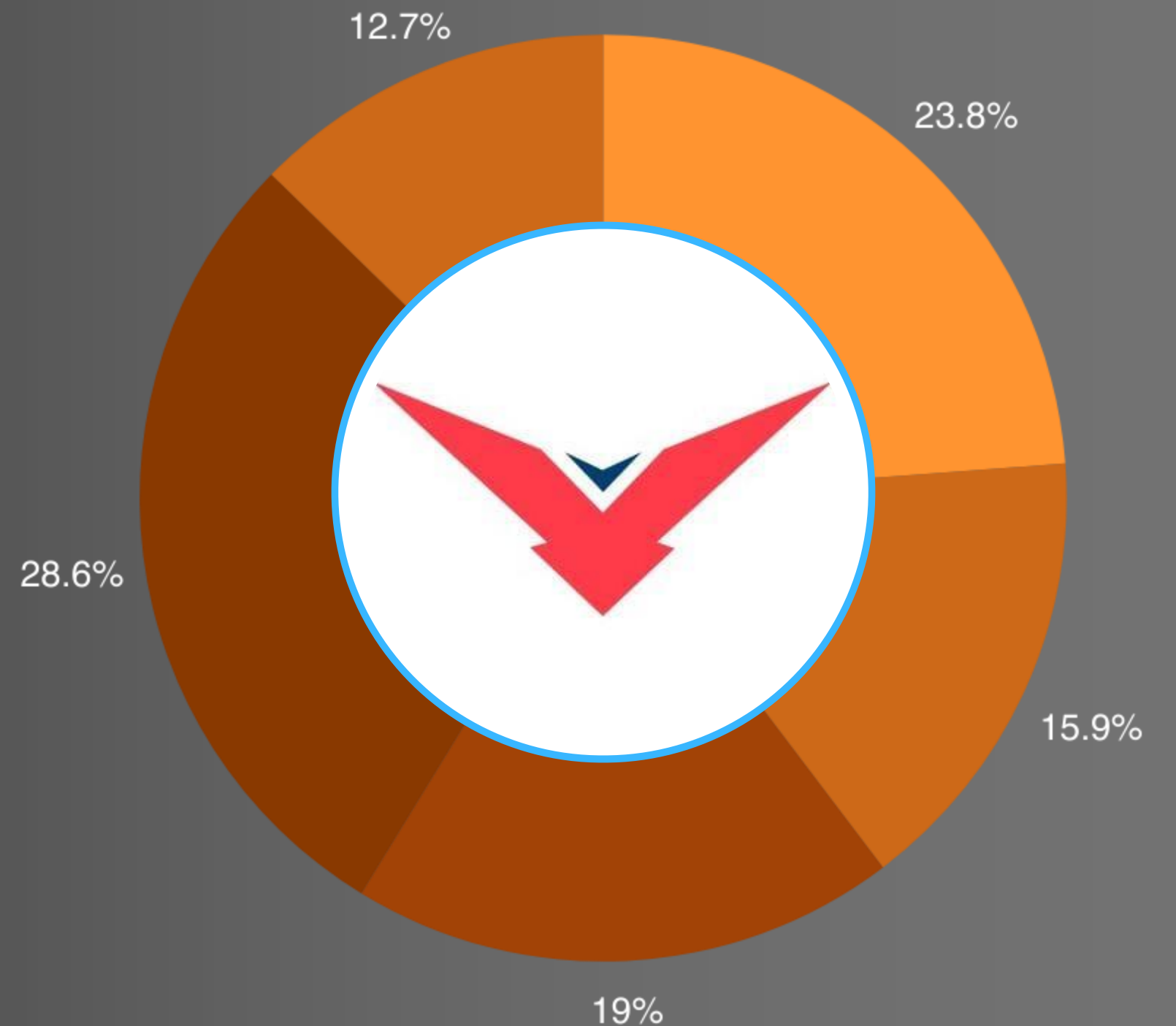
Operating expenses are the costs that a company incurs for running its day-to-day operations. As such, they don't apply to any costs related to the production of goods and services. Operating expenses are incurred through normal business operations. The goal of any company is to maximize output relative to OpEx. In this way, OpEx represents a core measurement of a company's efficiency over time.

Capex

Capital expenditures (CapEx) are purchases of significant goods or services that will be used to improve a company's performance in the future. They include the cost of fixed assets and the acquisition of intangible assets such as patents and other forms of technology. Capital expenditures are typically for fixed assets like property, plant, and equipment (PP&E). For example, if an oil company buys a new drilling rig, the transaction would be a capital expenditure.

Cost Consideration

- Material Cost / Basic Infrastructure
- Labor Cost / Manpower Cost
- Equipment and Machinery Costs
- Permitting and Regulatory Fees



Quality Assurance

Shidh Bhimeshwari Logistics Provides fully technology integrated system enabled high level of reliability to our customers. Automated processes, on-time dispatch and delivery, live tracking and monitoring system provides a sense of assurance to our customers. Our aim is to provide a peaceful and hassle-free experience. All our centers located at different locations enables fast movements. Since our entire process is technology enabled, most of our process are automated and hence transit time is significantly reduced. Our system's aim is to provide end-to-end visibility to our customers. We provide information to our customers at each level, with real time vehicle tracking to automated arrival alerts to keep them informed and at peace.

Single Window Operation

We provide comprehensive warehousing and distribution services that make it easy for businesses to get their products to market quickly and efficiently. Our single window solutions make it easy to track orders and inventory, and our vast network of carriers ensures that your products are delivered on time, every time.



Cost Effective

Sidh Bhimeshwari Logistics Make Better Uses of Available Storage Space and Increase the Storage Density. Clearly identify and try to eliminate spaces. Always tends to increase the storage density in bins and racks by improving the use of vertical space. Lowers the damage to the shipping containers by eliminating movement during transportation.

COST SAVING

Identifying The Best solution

Identifying Or analysing a Contract Logistics partner is much more than just finding a warehouse. Here at Sidh Bhimeshwari Logistics we get to know your business and work with you in partnership to develop solutions that not only meet your current requirements but can also evolve and support you as your business evolves and grows.

MARKET ANALYSIS



NEARMISS REPORTS

PRODUCT PROMOTION

Proactive Monitoring

Near misses are symptoms of undiscovered safety concerns. Sidh Bhimeshwari Logistics Near-miss reporting can help The Company be proactive when it comes to identifying negative trends and safeguarding employees. This, in turn, can help reduce workplace accidents overall and increase Your Material And Manpower safety culture

Increasing Your Presence

Our Nationwide presence, seamless partnerships, and innovative technology work together to produce our exceptional service offerings, improving Clients Brand efficiency across the entire supply chain. Our multi-modal approach has reduced transit times, ensuring your cargo reaches its destination as quickly as possible while keeping your customers Satisfied and increase your Presence.

THE PROCESS



CUSTOMIZED SOPS

We understand that no two businesses are alike. That's why we work closely with our clients to create customized Standard Operating Procedures (SOPs) that fit their specific needs and expectations.



ROUTINGS

Get in touch with our team of experts to help reduce your distribution logistics challenges. We have a deep understanding of the Supply Chain industry, so we can provide you with solutions that fit your unique needs.

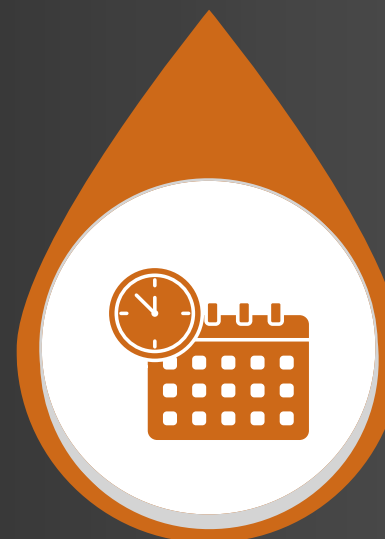


MILK RUN DELIVERIES

A Milk Run is a delivery system used to transport mixed loads from various suppliers to one customer. Instead of each supplier sending a truck every week to meet the needs of one customer, one truck (or vehicle) visits the suppliers to pick up the loads for that customer. This efficient system can save time and money for both the supplier and the customer.

STORAGE

We provide superior storage and logistics services to help businesses succeed. We have the knowledge and resources to help your company take on the competition by providing quality storage and logistics solutions at competitive rates.



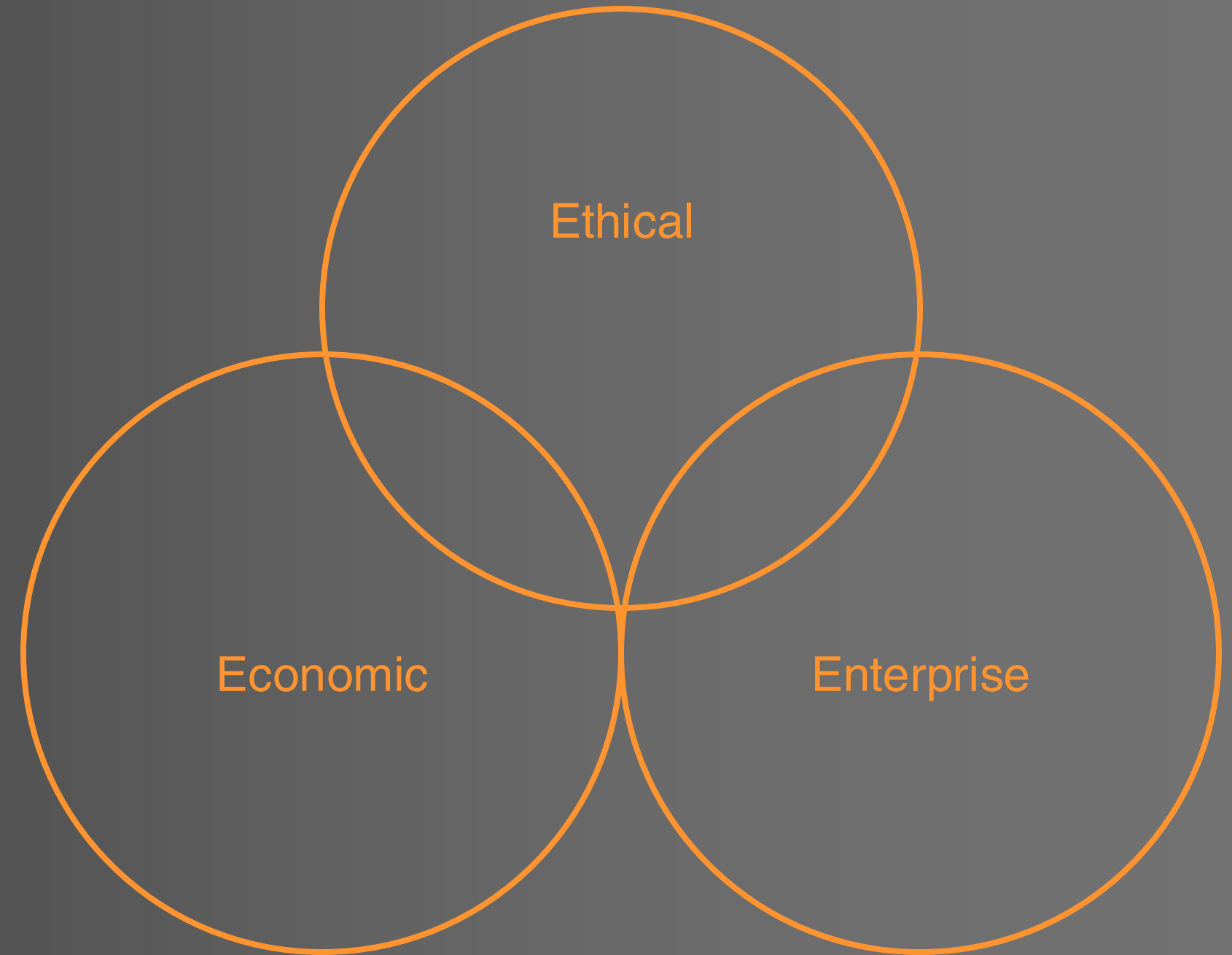
OPERATION

Seven vital aspects or the seven Rs define high-performing logistics processes. They are 'getting the right product, in the right quantity, in the right condition, at the right place, at the right time, to the right customer, at the right price. We offer end to end Supply Chain Solutions from origin to point of consumption across leading industries.



Sustainability

We believe our first responsibility is to the OEM, Manufacturers and Suppliers, to Buyers and SCM and all others who use our products and services. In meeting their needs everything we do must be of high quality. We must constantly strive to provide value, reduce our costs and maintain reasonable prices. Customers' orders must be serviced promptly and accurately. Our business partners must have an opportunity to make a fair profit. We are responsible to our employees who work with us throughout the india. We must provide an inclusive work environment where each person must be considered as an individual. We must respect their diversity and dignity and recognize their merit. They must have a sense of security, fulfillment and purpose in their jobs.



OUR ESTEEMED CLIENTELE



OUR ESTEEMED CLIENTELE



CORE INFRASTRUCTURE

01

With over 320 plus dedicated fleet of vehicle with trained drivers, covering 1 lakh kilometer every day in entire country. We are best in catering to any transportation requirement across the country with fast, efficient and express logistics services. Sidh Bhimeshwari Logistics offer both unmatched dependability and flexibility with our customized over the road Trucking / transportation solution which provides an efficient and reliable surface cargo services, movement in pan- india.



02

We offers to our customers a wide range of Value Added variety of Logistics infrastructure. We have the flexibility and the expertise to handle the Fork Lifts and Hydraulic cranes job at any time of the day. Our use of state-of-the-art infrastructure has helped our customers to Move their goods at lower cost and more reliability. With a wide range of state-of-the-art infrastructure, we are one of the leading Material Handling service providers. Our team of highly talented members has made this possible and we are entering a new paradigm of strength and excellence in providing complete Moving services.

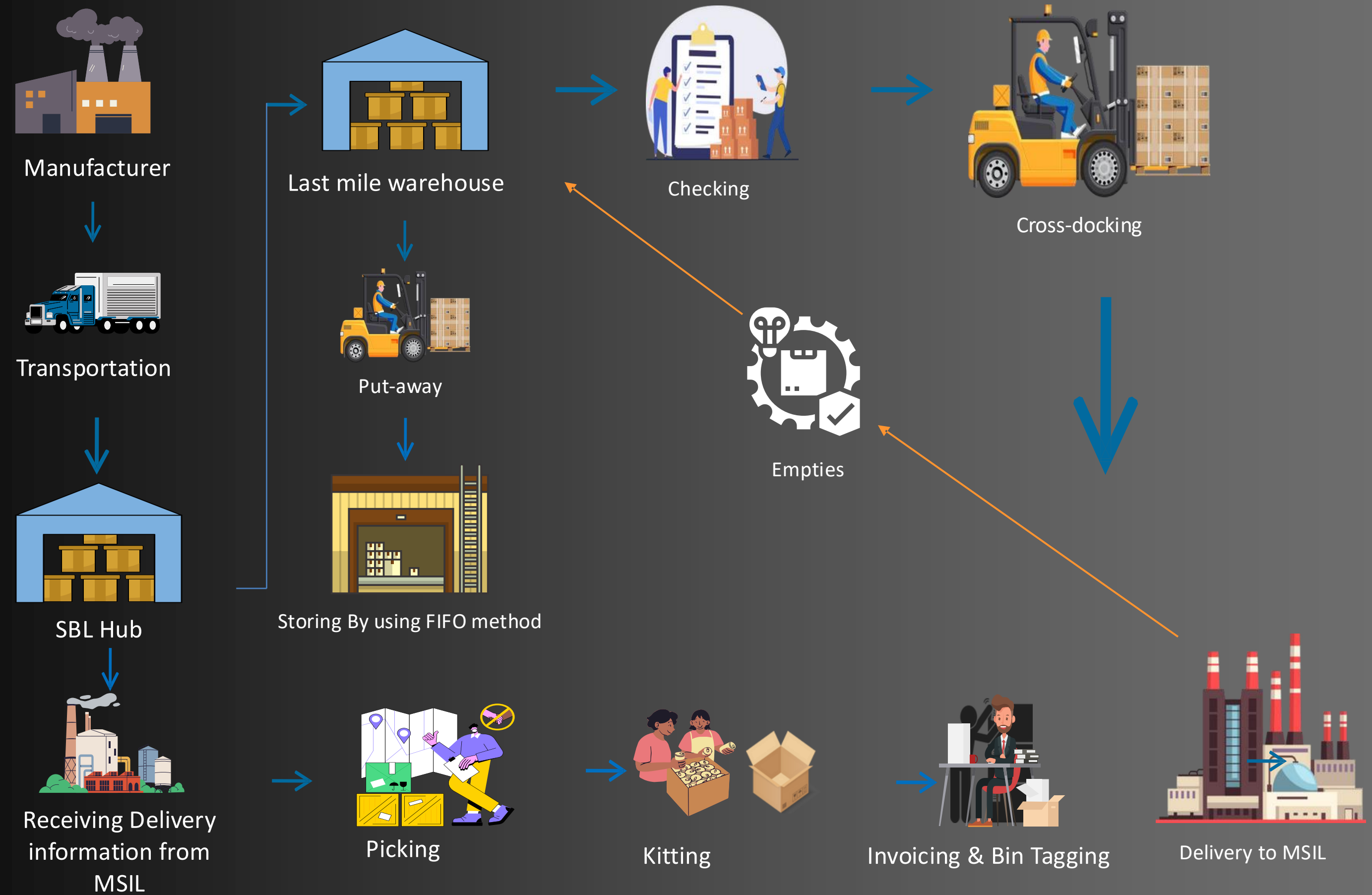


03

With an aim to provide cost effective, time-saving and door-to-door service to our beloved customers, we provide meticulously maintained Container service. Rendering demands of our customers with our seamless connectivity through our modern fleet of trucks. We have carved our name in the field of trucking and Containers because of our safe, fast and reliable services. We provide fully secured Containers with our specialized trucking system which is both economically-efficient and time-bound delivery.



SOME VALUE -ADDED SERVICES



Client Testimonials



Sidh Bhimeshwari Logistics Provides fully Technology Driven and Comprehensive services To us, Their Entire Team has Expertise to how will retain customers with prompt and trustworthy Response.



Our Complete operations are depends on Sidh Bhimeshwari Logistics services, We are associated with them From 2020 and it's a pleasent Journey that's why we prefer the best resolution for ahead.



Conclusion

Our Nationwide presence, seamless partnerships, and innovative technology work together to produce our exceptional service offerings, improving Clients Brand efficiency across the entire supply chain. Our multi-modal approach has reduced transit times, ensuring your cargo reaches its destination as quickly as possible while keeping your customers Satisfied and increase your Presence.

Key points

Our fully technology integrated system provide high level of reliability to our customers. Automated processes, on-time dispatch and delivery, live tracking and monitoring system provides a sense of assurance to our customers.

1.Safe operations-Our aim is to provide a peaceful and hassle-free experience.

2.Low Transit Times-All our centers located at different locations enables fast movements. Since our entire process is technology enabled, most of our process are automated and hence transit time is significantly reduced.

3.Complete Transparency-Our system's aim is to provide end-to-end visibility to our customers. We provide information to our customers at each level, with real time vehicle tracking to automated arrival alerts to keep them informed and at peace.



WE ARE

SIDH
BHIMESHWARI
LOGISTICS
PVT. LTD.

www.bhimeshewarigroup.com

Let's Explore

*Corporate Office Address :-
502/5TH FLOOR, ADI PRIME ESTATE, NEAR
SWRAJ CAPITAL, MOSHI, PUNE – 412105*

Mobile: +91 87504 61565

